

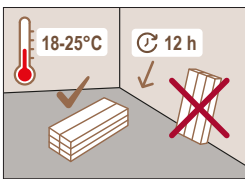


INVICTUS®
GREAT FLOORING · INVINCIBLE PERFORMANCE

INSTALLATION GUIDELINES MAXIMUS HERRINGBONE CLICK

Invictus Maximus Herringbone Click is a luxury vinyl floor, suitable for commercial and residential use. It is not suited for installation outdoors nor in rooms that will be continually wet. It is essential that these installation guidelines are followed carefully to ensure a quality fit.

1. PREPARATION

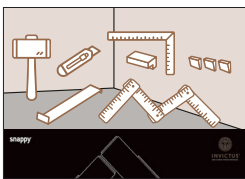


TRANSPORT AND STORAGE

For both transport and storage the floor boxes must be stored on a flat surface. Boxes must be stored inside. Do not store the cartons in very cold ($<2^{\circ}\text{C}$) or very warm ($>40^{\circ}\text{C}$) or humid places.

ACCLIMATISATION

It is important to **store the planks for at least 12 hours before installation, at room temperature (18-25°C)** in the room where the installation is to take place. Your Invictus floor should be stored flat in its packaging, in small neat piles, max. 5 boxes high. To condition, the boxes must be kept away from direct sunlight, heaters or air vents. This room temperature should be maintained throughout the installation and for least 72 hours after installation. The subfloor temperature should be above 15°C.



TOOLS

Utility knife and blades, rubber mallet, pencil, try square, tape measure / folding rule, spacers, tapping block, pull bar. (Optional: guillotine).

And our herringbone cutting & measurement tool: **'Snappy'**

2. AREAS OF USE & SUBFLOOR REQUIREMENTS

Maximus Herringbone Click is **not suited for** outdoor use or in areas with large temperature variations. Protect your floor from long-lasting exposure to direct sunlight by using appropriate window coverings. Extreme solar radiation, heat and extreme temperature fluctuations can cause damage.

Ensure that the indoor temperature is always kept above 6°C and ideally between 18 and 25°C.

Subfloor preparation and floor installation should always comply with the applicable national regulations and installation standards.

SUBFLOOR REQUIREMENTS

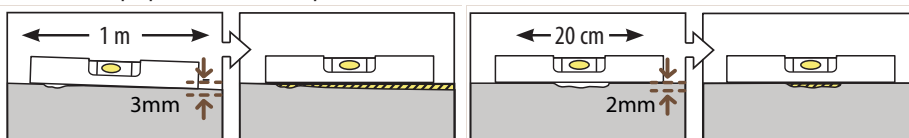
Careful subfloor preparation is essential for an excellent result. Roughness or unevenness in the subfloor could cause excessive wear on high spots or indentation on lower spots. Remove all traces of plaster, paint, glue, oil, grease, etc. and vacuum.

The subfloor must be hard, clean, dry and smooth.

The following are not approved substrates: rubber or other compressible underlays, rubber, cork or asphalt tiles, cushion backed resilient flooring; Textile floor coverings (such as carpet, needle felts, etc.) must be removed.

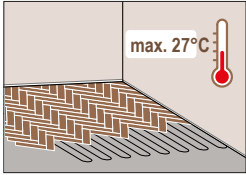
Maximus Herringbone Click can be installed on: ceramic, porcelain, marble and granite tiles. They must be properly bonded with intact grout joints and free of cracks or loose tiles. Tile surface and grout joints should be free from coatings and dirt. Wood, laminate and linoleum floor coverings are approved, provided that they are smooth, even, dry and clean.

Although Maximus Herringbone Click is not susceptible to damage from moisture, **subfloors must be checked for moisture problems**: excessive subfloor moisture is an ideal breeding ground for mold, mildew, fungus and mites - all of which can contribute to an unhealthy indoor living environment. If excess moisture is found in the substrate proper remediation steps should be taken before installation.



Make sure **floor level deviation is a maximum** of 3 mm per m, and 2 mm per 20 cm. (If these margins are exceeded, the subfloor must be evened out with a suitable filler or levelling compound. Any isolated highpoints / ridges should first be removed in order to avoid damage to the product.)

If you are not certain about the quality or suitability of your subfloor for the installation of Maximus Herringbone Click, then contact your dealer, who will be more than happy to help you.



UNDERFLOOR HEATING

Maximus Herringbone Click is suited for use with **warmwater** underfloor heating and **also electric heating systems** with a maximum performance of 70 W/m². It is important that the **temperature at the subfloor surface does not exceed 27°C**. Only underfloor heating systems with heating components – hot water or electric – embedded in the subfloor are suitable. Heating films/wire or other systems that are placed on top of the subfloor are not suitable. The heating elements **must be fully embedded in a well-bonded and suitable levelling compound**. The floor must be fully supported by the heating system, to achieve a homogenous temperature of the floor.

Maximus Herringbone Click is not suitable for reversible heating/floor cooling systems.

The underfloor heating **must be switched off 48 hours before installation and also during installation**.

48 hours after installation, you can re-start the underfloor heating, by **gradually increasing** the temperature by $\pm 5^{\circ}\text{C}$ daily, up to a maximum floor temperature of 27°C. Ideally, avoiding full operating temperature for 7 days. (Follow the current standard of EN1264-2). **See separate document 'Underfloor heating Protocol' on our website.**

Always take care of gently heating-up and cooling-down of the heating system. Rapid temperature changes may lead to joints and openings of the floor. Avoid hot spots and thermal blocks on the surface.

DIFFERENT SUBFLOORS

Concrete/screed

Let new concrete dry sufficiently. The moisture content of the subfloor must be **less than 75% RH** at min. 20°C.

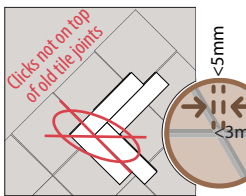
Residual moisture content from the subfloor:

For unheated screeds: < 2.0 CM% in case of cement & < 0.5 CM% in case of anhydrite

Underfloor heated screeds: < 1.5 CM% in case of cement & < 0.3 CM% in case of anhydrite

Always record and keep your moisture content results.

Repair surface imperfections with an appropriate repair compound and check if a primer or sealer is needed. Vacuum the subfloor afterwards to remove all debris.



Tiles

Check the subfloor for moisture problems. The joints of the Maximus Herringbone Click floor covering should never be aligned with the underlying tile joints. It is not necessary to fill the grouts of a ceramic tiles subfloor with joints when these do not exceed 5mm in width and 3mm in depth.

Wooden subfloor

Make sure the subfloor is level and with little flexibility. Fix down all loose boards/parts. Do not install Invictus Maximus Herringbone Click on wooden subfloors with excessive movement or deflection.

Underlay

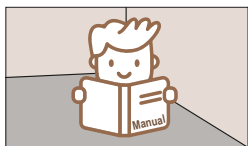
Even though Herringbone Click has excellent acoustic values, we recommend to install on top of our **Invictus Firmo underlay** as it guarantees the perfect performance of your Invictus floor:

- **Acoustic performance:** reduces walking noise and the transmission of noise to the room below. (17dB !)
- **Evens out small imperfections** of your subfloor.
- **Increases the impact resistance**
- **Compatible with underfloor heating**

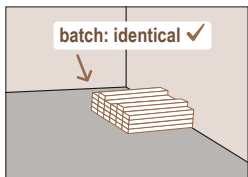
Do not use laminate or other underlays underneath your Herringbone Click floor, as this could lead to joint openings or irreparable damage to the locking system. Damage to your Invictus floor caused by the use of a different underlay than the Invictus Firmo, will void your Invictus warranty.

In cases of doubt regarding subfloor condition, seek professional help or contact your retailer.

3. BEFORE YOU START



Read the manual before installation. It is essential that these installation instructions are followed carefully to ensure a quality fit.



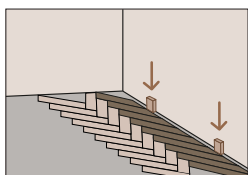
Ensure that your flooring is the correct design and color and **check all boards for visible defects**, both before and during installation. Planks with defects may not be used. Installation of flooring implies acceptance of materials.

Use only a single production batch number for each installation, as we cannot guarantee a shade match between different batches.

Always keep the production batch number (printed on the box), together with your order form/invoice.

Consider saving a few planks for any potential future repairs.

Make sure that you mix panels from different boxes, in order to minimize shade variations. This will ensure a more natural looking floor.

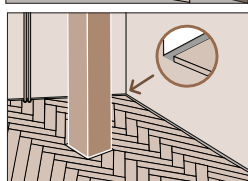


Maximus Herringbone Click should be **installed 'free floating'**. This means that there must be **an expansion gap** between the floor and walls and for any permanent fixtures (columns, pipes,...). The floor should be able to contract and expand freely, so may never be screwed or nailed down to the subfloor. When installing in more than one room, you must use appropriate **profiles at doorways**. Also if the area is longer and/or wider than 20 m (normal conditions) and 8 m (extreme conditions), see below. Your retailer will be able to supply the suitable profiles.

Always acclimate the floor during 12 hours and allow the necessary expansion gap (see table) against vertical surfaces and all fixed objects. Maximus Herringbone Click is not suited for unheated rooms, keep room temperature **between 10°C and 35°C** at all times.

Avoid prolonged exposure to direct sunlight. Protect your floor from direct heat by using **window shades/curtains**. Protect your floor also from any **other direct heat sources** f.e. a wood stove / fire place.

The floor installation must be **the last operation in the construction project**. Heavy furniture, such as kitchen cabinets cannot be installed on top of floating flooring, as this restricts the floor's ability to expand. Do not fix door hardware or other objects through vinyl floating floors.



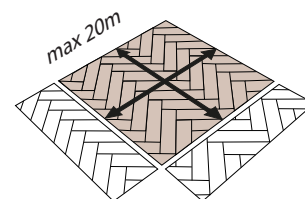
Defining the needed width of the expansion gap :

room width or length in m	needed expansion gap in mm
≤ 5	6
6	6
8	7
10	8
15	10
20	12

In normal room conditions :

room temp. between 10°C and 35°C, no direct sunlight through unprotected glass on the floor

Transitions must be used if the area is longer and/or wider than **20 m**.



room width or length in m	needed expansion gap in mm
≤ 5	10
6	10
8	12
10	not allowed*
15	not allowed*
20	not allowed*

In extreme conditions: room temperature between 6°C and up to 60°C :

f.e. glass enclosed sunrooms, rooms with big temperature fluctuations (>5°C in 12 hrs)

Transitions must be used if the area is longer and/or wider than **8 m**. Installation temperature of maximum 35°C allowed!

Note: Ideally, use Maximus dryback in these conditions: we have an extended range with the same designs and colors, very well suited for these kind of conditions.

Note: for temperature-controlled rooms or conservatories: make sure the cold air is not pointed directly at the floor.

* use an expansion profile

4. INSTALLATION

Decide your installation direction: normally the planks/tiles are installed perpendicular to direct sunlight sources, including large windows, doors, etc.

Measure the room carefully. Proper planning and layout will prevent narrow plank widths at the walls. Calculate how many full rows will fit.

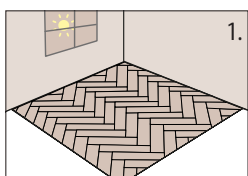


Your Maximus Herringbone Click boards **can be cut using a sharp metal blade** and ruler or use a guillotine. Cut the boards decor side up.

Do not use tapping blocks or other tools common to hardwood and laminate installation to prevent damage to the locking mechanism.

A small (15cm) piece of scrap flooring with the tongue joint intact can be used as a tapping block and locked into the joint groove before tapping.

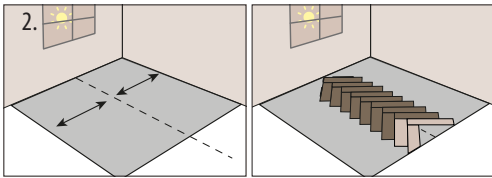
Use a small brush to clean the joints prior to locking, as debris will cause failure of the joint after interlocking the pieces



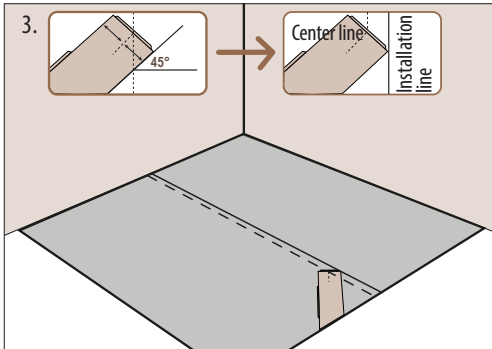
1. START THE INSTALLATION

It is critical to keep the first two rows straight and square, as they are the "foundation" for the rest of the installation. Check regularly for straightness and make sure all planks are fully locked. If slight gapping is noticed, disassemble the row.

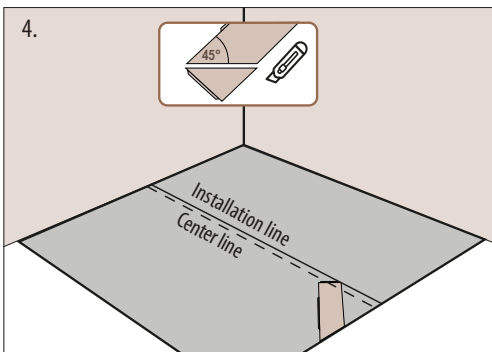
Decide your installation direction: The ideal direction is to be parallel to the main window.



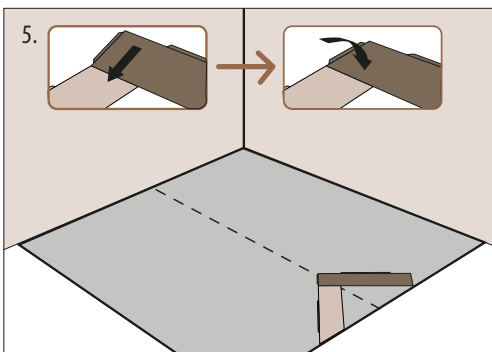
2. Measure the room carefully, **define and mark out the CENTER LINE**, which divides the installation area equally into two.



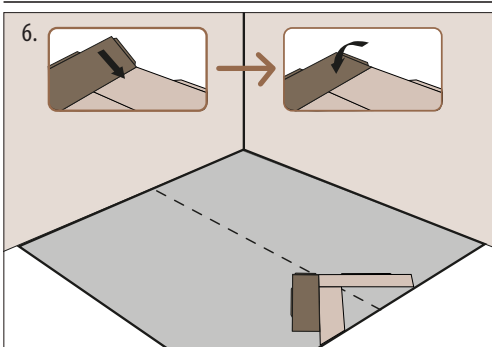
3. **Define the INSTALLATION LINE** to ensure the straightness. Place the first plank on the center line with its long side tongue facing upwards. Define the middle point of its short side, meet this point with the center line and build a 45° angle. The installation line runs through the top edge of the plank and is parallel to the center line.



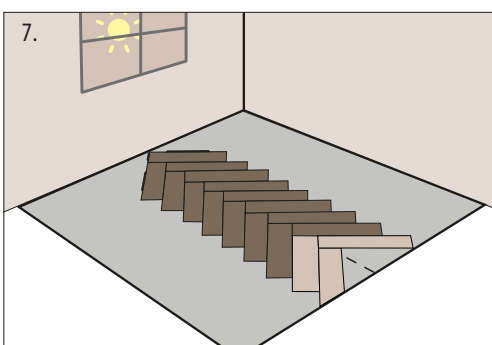
4. **Cut off a 45° equilateral triangle** from the lower part of this plank. Cut the boards decor side up. To cut, use a utility knife, move along the surface of the plank with even pressure and snap. Now place the cut side onto the boarder, keeping an expansion gap of 6mm min. (see table point 3. Before you start)



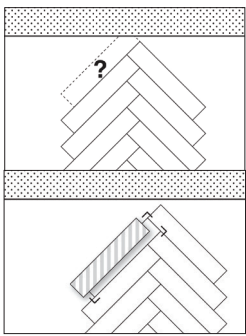
5. **Install the next plank** by inserting the tongue into the groove, adjust to a 90° angle and fold down. Press the top of the drop-lock joint down with the thumb to properly align the joint. You can use a rubber mallet to make sure the tongue and groove are properly clicked together. Keep the force used to a minimum.



6. **Continue to work** with the next plank above using the same method. Make sure to stay on the installation line.



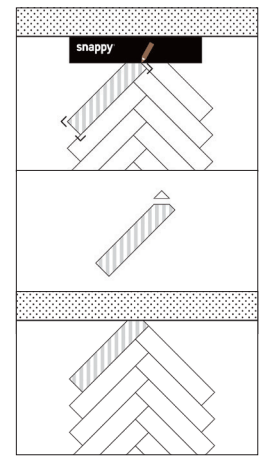
7. **Follow the installation line** and finish installing the first 2 rows in the center of the room.



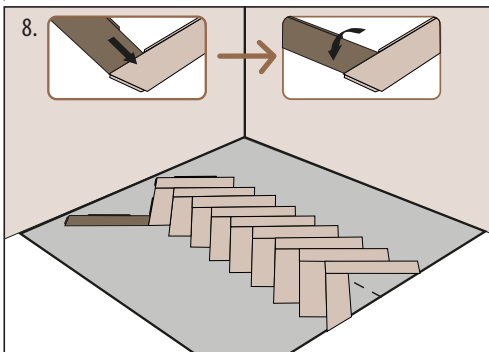
WITH 'SNAPPY' : THE HERRINGBONE CLICK CUTTING TOOL

Arriving at the end of your first 2 rows: how to measure and cut your last planks:

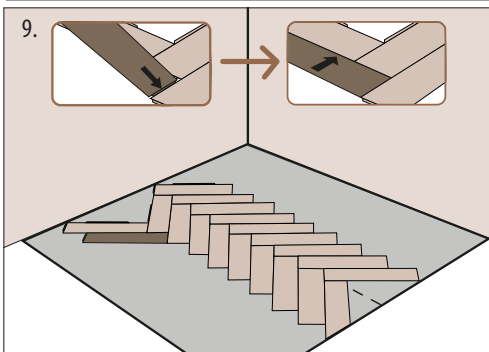
- 1) place the plank you need to cut on top of the previous plank
- 2) place Snappy on top of it, with Snappy's long side against the wall
- 3) mark with a pencil, the piece that needs to be cut of
- 4) cut it with a utility knife
- 5) install this adjusted plank



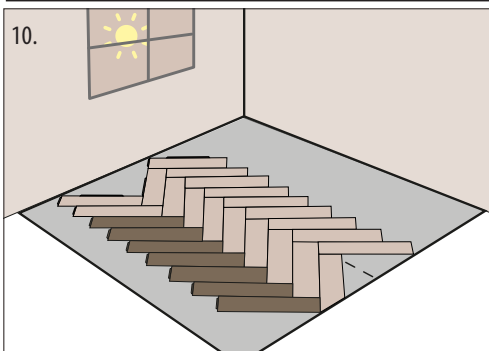
7bis.



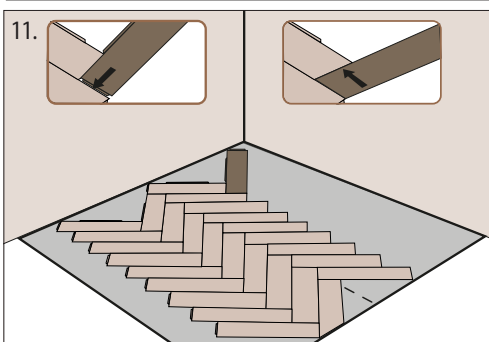
Start with a new row, find the 90 degree angle, connect the tongue with the groove, insert and fold down.



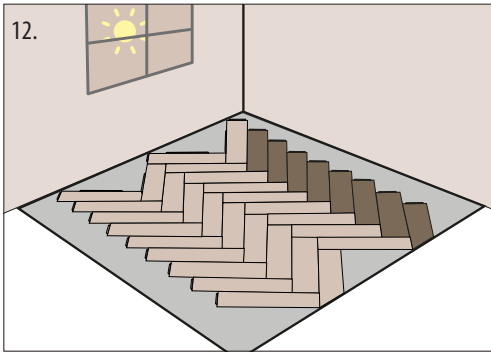
Connect the next plank by the short side: connect tongue with groove and fold down. Then connect the plank on the long side by pulling the plank towards you. If needed, use the rubber mallet and tapping block to firmly close the tongue and groove connection.



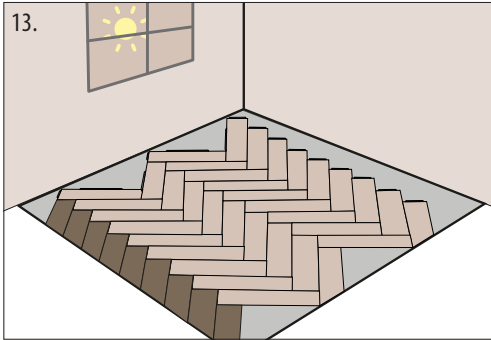
Follow the same method and finish this row.



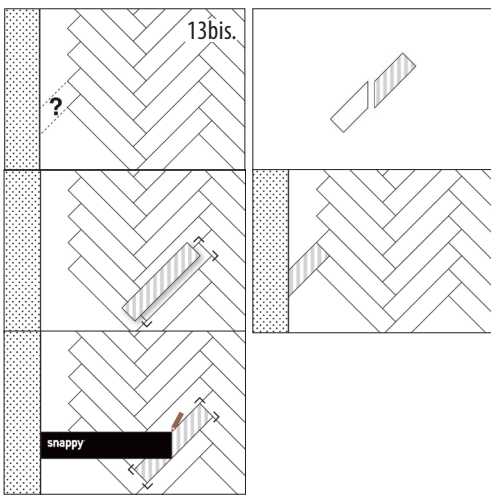
Start with the next row, connect the plank first by the short side. See step 9.



12. **The last plank of this row needs to be cut and adjusted** as previously done to the first plank at the beginning of the installation (see point 4).



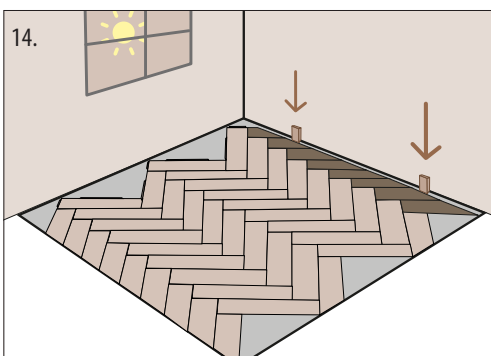
13. **When installing the row beside the wall**, always keep the necessary expansion gap (see table point 3.) from plank to the wall. Measure and adjust the length of each plank, find the angle, apply rubber mallet and pull bar to snap the tongues and the grooves together.



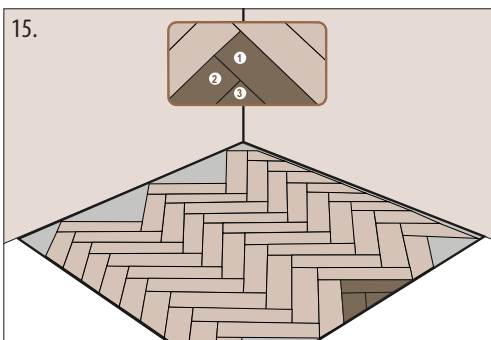
WITH 'SNAPPY' : THE HERRINGBONE CLICK CUTTING TOOL

Beside the wall: how to measure and adjust the length of each plank :

- 1) place the plank you need to cut on top of the plank, that is installed parallel to it
- 2) place Snappy on top, with it's short side against the wall
- 3) mark with a pencil, along the other short side of Snappy, the piece that needs to be cut of
- 4) Cut it with a utility knife
- 5) install this adjusted plank



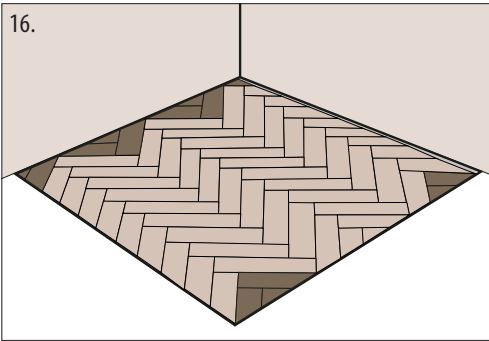
14. **Continue with the same method**, until the last vertical row beside the wall is fixed.



15. **To fill the empty areas**, measure carefully to find or cut the missing pieces. **Start with the longest piece**, then the shorter and end with the shortest.

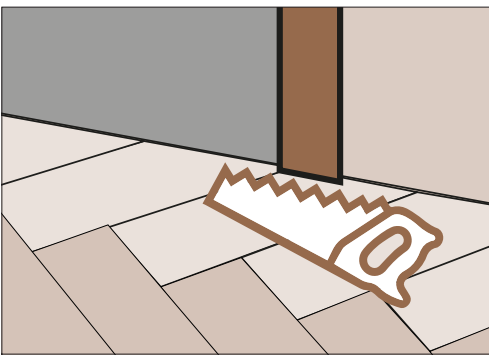
To measure the pieces (1,2 and 3) : Use Snappy again cfr. step 13bis.

16.



Finish the installation, all the planks shall be seamlessly connected, and the herringbone pattern shall appear straight and symmetric.

NOTE

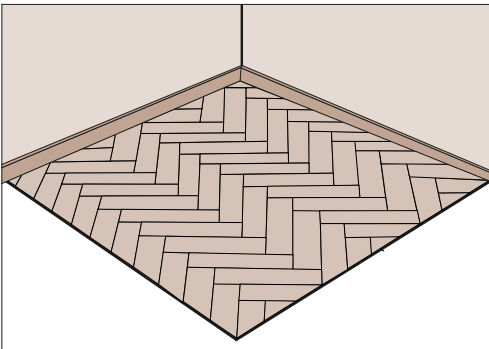


Door frames need to be undercut to allow for possible expansion of the finished floor under the door frames.

Lay a plank face down next to the door frame. Saw the door frame just above this plank.

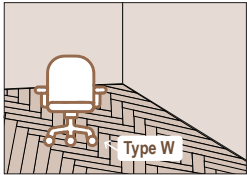
Then slide the last plank under the door frame. Use the pull-bar to firmly close the click connection.

5. FINISHING



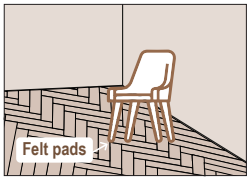
Use Invictus accessories for a perfect result. Skirtings have to be attached to your wall, never attach them directly onto the installed floor. Permanent sealing products (acrylic or silicone) should never be used to seal up the gap between the floor covering and skirting/scotia's/profiles. Joints on fixed building elements (door frames, heating pipes, etc.) should never be completely sealed with elastic filler, but use filler twine. Profiles, doorstops and suchlike should not be screwed through the floor covering into the subfloor.

6. MAINTENANCE For more detailed information: please read our 'INVICTUS MAINTENANCE & CARE GUIDE' online



DOORMATS

To keep your floor in good condition, it is important to place **non-rubber backed doormats** at all entrances, to keep dirt, sand and water off of the floor. Placing doormats will eliminate abrasive particles driven by footwear and will extend the life of your floor. Do not use rubber-backed mats, as long-lasting contact with rubber can cause permanent discoloration. Never place doormats on a wet floor.



FELT PADS / NO RUBBER

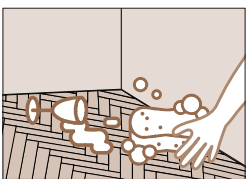
Use protective caps on furniture legs. Rolling office chairs should be fitted with soft, **non-rubber casters**, to avoid permanent damage to your floor. **Use felt or protective pads**, especially for furniture or other items that contain rubber and directly touch the floor (f.e. fitness appliances). Prolonged contact with rubber will cause permanent discoloration.

Use a **suitable desk mat** to protect your floor from damage due to castor chairs. Periodically clean castor wheels and check for wheels that may be broken (and if so, replace immediately).



MOVING FURNITURE

Avoid dragging or sliding heavy items or furniture across the floor. Use protective boards or appropriate furniture movers designed for use over hard surface flooring to move your furniture.



CLEANING

Initial Cleaning

First remove all dirt and dust from the flooring with a brush or vacuum cleaner. Then clean with water and a neutral pH detergent, until the water stays clean. We recommend to use our Invictus PU Cleaner, other cleaning products may contain agents that damage resilient floor surfaces.

Regular cleaning

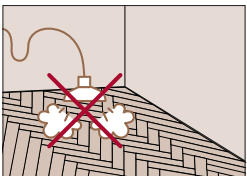
Daily/ weekly maintenance by sweeping, vacuum or dust mopping or using a damp mop. (do not use vacuums with metal heads). Regularly sweeping removes loose dirt or grit as these can cause fine scratches.

When required, use a solution of clean water and our Invictus PU Cleaner. Do not flood the floor with water. Rinse thoroughly and soak up residual water.

Always wipe up spills as soon as possible, to reduce the risk of slipping and possible staining.

Do not use chlorinated solvents. Never use wax or varnish coating. Never use maintenance products that contain wax or oil. (furniture polish spray should be avoided as they can cause slippery floors)

Never use a steam mop.



7. WARRANTY INFO AND CONDITIONS

Warranty for first user

If you notice a defect, contact your dealer within two weeks with your original purchase receipt. For more detailed information: www.invictus.eu

8. LEGAL INFORMATION

This document presents the general installation instructions, based on the latest available information. For the best result, and to ensure the validity of the warranty, these instructions should be followed carefully.